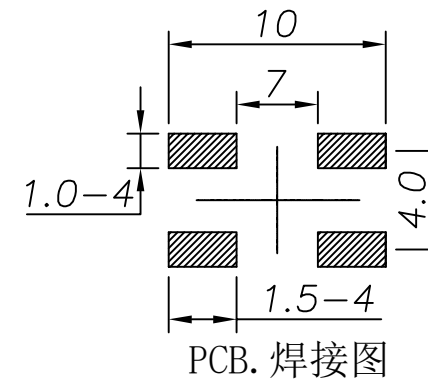
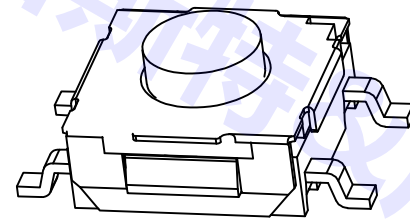
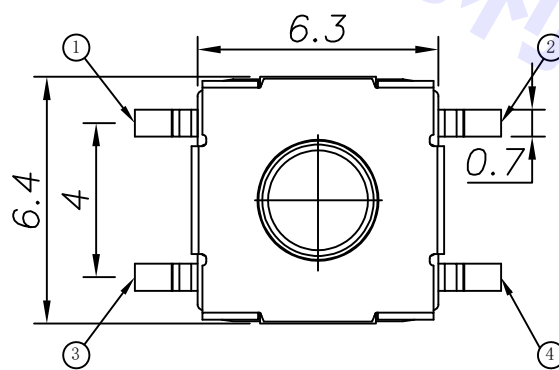
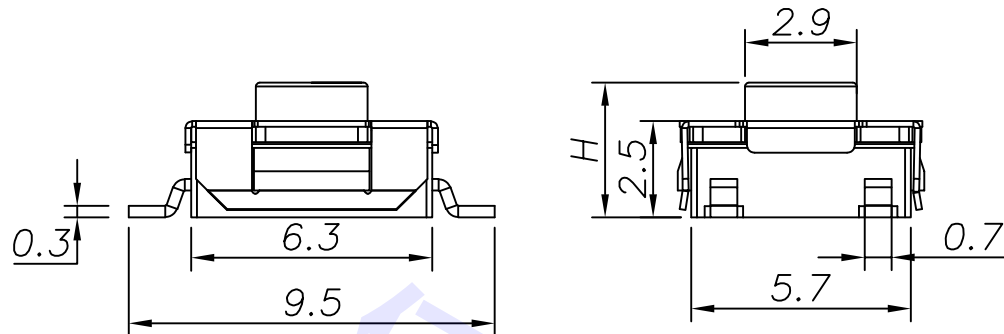
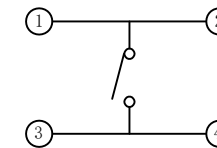


REV. LTR.	DESCRIPTION	SIGN	DATE



PCB. 焊接图

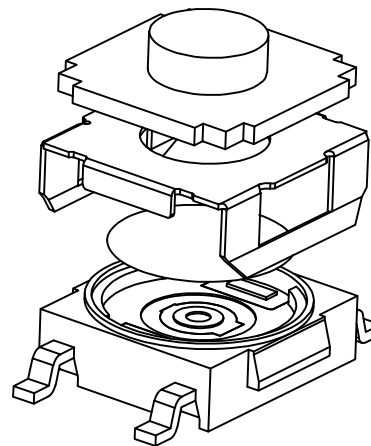


电路图

H	
3.1	3.5
4.3	4.5
5.2	

## 主要技术规格:

1. 额定值: 50mA DC12V
2. 接触电阻:  $\leq 50\text{m}\Omega$
3. 操作力:  $250 \pm 40\text{gf}$
4. 行程:  $0.25 \pm 0.1\text{mm}$
5. 绝缘电阻:  $\geq 100\text{M}\Omega$
6. 抗电强度: 250V 50HZ 1Min.
7. 寿命: 100,000 Cycles
8. 防水等级: IP67



⑨				
⑧				
⑦				
⑥	触点	1	黄铜	镀银
⑤	端子	4	黄铜	镀银
④	基座	1	PPA	黑色
③	簧片	1	不锈钢	镀银
②	盖板	1	冷轧钢	镀银
①	按钮	1	硅胶	蓝白红紫橙
NO.	DESCRIPTION	QTY	MATERIAL	PLATING
UNIT:MM	TYPE:	MODEL NO:	PAPER NO: A4	PAGE 1 OF 1
	Tact Switch	EL-6601S 脚距9.0	TOLERANCE	ANGLES
DESIGNER BY: Vincent Fu 2018/10/17	CHECK BY: Kay l 2018/10/17	APPROVED BY: Eemhai Fu 2018/10/17	$\pm 0.3$	$\pm 2'$
GDEL 深圳市亿利百斯特电子有限公司			SCALE	VER
广东亿利精密电子有限公司			FULL	1