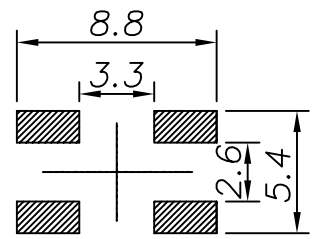
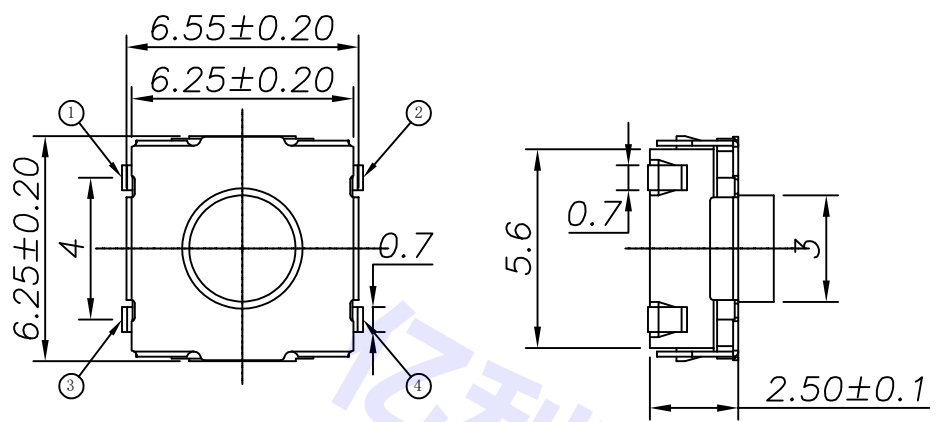
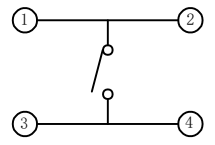


REV. LTR.	DESCRIPTION	SIGN	DATE

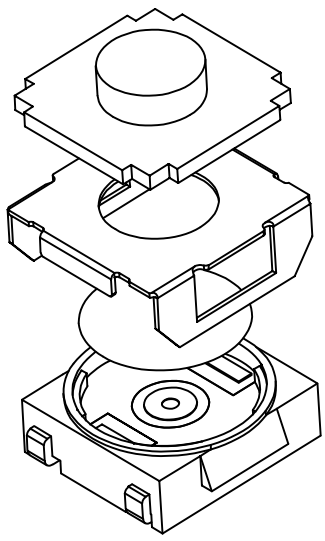
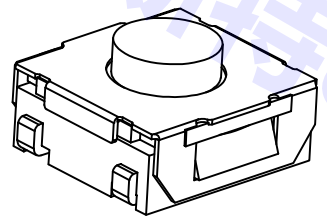
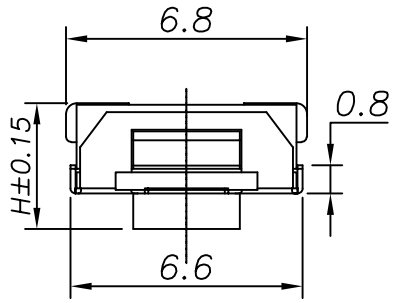


H	
3.1	3.5
4.3	4.5
5.2	5.5

PCB. 焊接图



电路图



主要技术规格:

1. 额定值: 50mA DC12V
2. 接触电阻: ≤50mΩ
3. 操作力: 180g±30&f250±40gf
4. 行程: 0.25±0.1mm
5. 绝缘电阻: ≥100MΩ
6. 抗电强度: 250V 50HZ 1Min.
7. 寿命: 500000 Cycles
8. 防水等级: IP67

⑨				
⑧				
⑦				
⑥	触点	1	黄铜	镀银
⑤	端子	4	黄铜	镀银
④	基座	1	PPA	黑色
③	簧片	1	不锈钢	镀银
②	盖板	1	黄铜/冷轧钢	镀银
①	按钮	1	硅胶	蓝白红紫橙
NO.	DESCRIPTION	QTY	MATERIAL	PLATING
UNIT:MM	TYPE:	MODEL NO:	PAPER NO: A4 PAGE 1 OF 1	
	Tact Switch	EL-6202 U脚	TOLERANCE	ANGLES SCALE VER
			±0.3	±2° FULL 1
DESIGNER BY:	Vincent Fu 2018/10/17		GDEL 深圳市亿利百斯特电子有限公司 广东亿利精密电子有限公司	
CHECK BY:	Key l 2018/10/17			
APPROVED BY:	Eemhai Fu 2018/10/17			