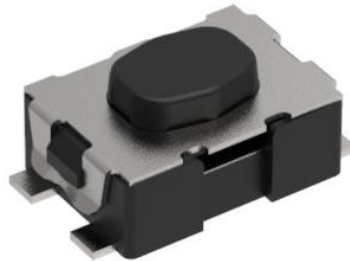


承認書

APPROVE SHEET



敬請承認如下之形式規格書：

客戶名稱

CUSTOMER: _____

貴公司製品名

本公司製品名：

防水轻触开关

CUSTOMER PN: _____ PRODUCT PN: _____

貴公司規格

本公司規格：

EL-47019PBS (IP65)

APPROVAL DAT: _____ PRODUCT CODE: _____

客戶料號：

本公司規格書編號：

CUSTOMER NO.: _____ PRODUCT DRAWING NO.: _____

新品承認

NEW APPROVE

規格變更再承認

CHANGE CODE APPROVE

AGAIN

材料變更再承認

CHANGE MATERIAL APPROVE

AGAIN

APPROVAL

批准

朱艳军

DATE:

CHECK

審查

彭佳伟

DATE:

DESIGN

設計

王园

DATE:

貴公司承認欄

APPROVAL SIGNATURES

請於____年____月____日前承認返回

日期 DATE: _____

PLEASE RETURN TO ADMIT XUNIANRURI

深圳市亿利百斯特电子有限公司

ShenZhen ElyBest Electronics Co ., Ltd

付文鹏 (Vincent Fu)

Tel : 0755-28213003

Fax: 0755-85215085

Mob: 18923844556

Email : vincent@elybest.com

Add : 深圳市龙岗区平湖街道竹高塘路88号旭美智创园2栋2楼

规格承认书			规格书编号 2022040201
品名	轻触开关	型号	EL-47019PBS
			1/10

1. General Specification 基本说明

1.1 Scope 范围 This specification covers the requirements for single key switches which have no key top(TACT SWITCHES:MECHANICAL CONTACT).此规范含盖单推柄和无推柄的轻触开关要求

1.2 Operating Temperature Range 使用温度范围
-40 ~85℃(normal humidity, normal press.) 正常湿度, 标准压力

1.3 Storage Temperature Range 保存温度范围
-40 ~85℃(normal humidity, normal press.)

1.4 Test Conditions 测试条件

Tests and measurements shall be made in the following standard conditions unless otherwise specified: 测试和计量按下列标准条件除非特殊说明

Normal temperature (temperature 5 ~35℃) 标准温度

Normal humidity (relative humidity 25 ~85%) 正常湿气

Normal pressure (pressure 86 ~106 Kpa) 标准压力

In case any question arises from the judgment made, tests shall be conducted in the following conditions:

Temperature (20±2℃) 温度

Relative humidity (60 ~70%) 相对湿度

Pressure (86 ~106Kpa) 压力

2. Type Of Actuation 动作类型

Tactile feedback 轻触返回

3. Contact Arrangement 1 poles 1 throws 接触形式 1 回路 1 接点

(Details of contact arrangement are given in the assembly drawings.)
细接点形式在装配图中

4. Maximum Ratings DC 32 V 50 mA 最大额定值

DC 20 mV 1 mA 最小额定值

规格承认书

规格书编号

2022040201

品名

轻触开关

型号

EL-47019PBS

2/10

5. 外形、结构: 5.1 外形图:

REV (版本)	MARK (标记)	DESCRIPTION (描述)	DATE (日期)	APPROVED (批准)

ROHS
Compatible

ELECTRICAL DIAGRAM

PCB WELDING DIMENSIONS

MATERIAL PORTFOLIO CHART

REFERENCE DRAWING

SPECIFICATION

- Rating: DC 32V 50mA Max / DC 20mV 1mA Min
- Contact resistance: 100mΩ MAX
- Insulation resistance: 1GΩ Min, 100V
- Dielectric strength: 250V AC/min
- Travel: 0.2±0.1mm
- Operating force: 300gf±100gf
- Operating life: ≥5X10⁴cycles
- Operating temp: -40°C to +85°C
- Storage temp: -40°C to +85°C
- Protection grade: IP40

NO (序号)	PART NAME (部件名)	QTY (数量)	MATERIAL (材料)	REMARK (备注)
6	TERMINAL (端子)	1	BRASS	Ag plating
5	HOUSING (底座)	1	PA	BLACK
4	CONTACT FORM (弹片)	2	SUS	Silver coated
3	TAPE (防尘胶)	1	GATHERS THE IMIDE	YELLOW
2	STEM (按钮)	1	PPA	BLACK
1	COVER (盖板)	1	SUS	

UNSPECIFIED TOLERANCE (未指定的公差)	DRAWN (制图)	DATE (日期)	SCALE: 1:1 (比例)	ITEM (产品类型)
ANGULAR (角度) ±0.5°	P. ZHANG	2022.04.02	VIEW: (视图)	PART NO (型号)
16 < L ≤ 63 ±0.4	CHKD (审核)	2022.04.02	UNIT: mm (单位)	DWG. NO (图号)
4 < L ≤ 16 ±0.3	APVD (批准)	2022.04.02		
L ≤ 4 ±0.2	XR. WAN			

GDEL 深圳市亿百斯特电子有限公司
广东亿利精密电子有限公司

EL-47019PBS

J1.5085.00-004

规格承认书

规格书编号
2022040201

品名

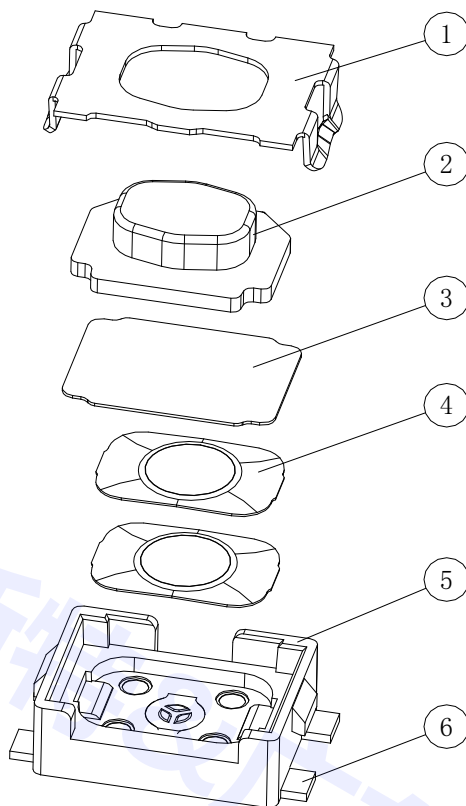
轻触开关

型号

EL-47019PBS

3/10

5.2 构造:



序号	零部件名称	数量	材料名称	表面处理	备注
1	COVER	1	SUS		
2	STEM	1	SILICONE		BLACK
3	TAPE	1	GATHERS THE IMIDE		YELLOW
4	CONTACT FORM	2	SUS	Silver coated	
5	HOUSING	1	LCP		BLACK
6	TERMINAL	1	BRASS	Ag plating	

规格承认书

规格书编号
2022040201

品名

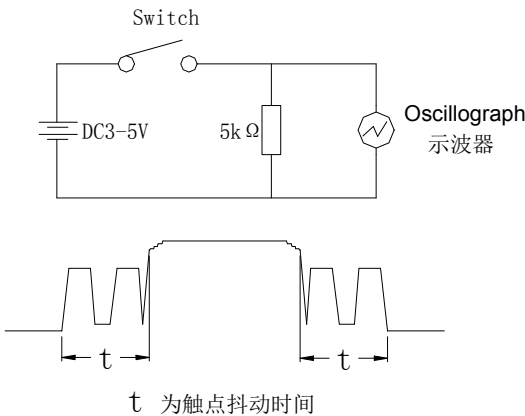
轻触开关

型号

EL-47019PBS

4/10

6. General Specification 电气性能

Item 项目	Test Condition 测试条件	Requirements 要求
6.1 Contact Resistance 接触电阻	Applying static load twice the actuating force to the center of the stem, measurements shall be made with a 1 kHz small-current contact resistance meter. 用两倍的动作用力作静负载施加于按钮的中心,并用1千赫小电流接触电阻仪测量	100 mΩ 以下
6.2 Insulation Resistance 绝缘电阻	Measurements shall be made following application of DC100V potential between terminals and between individual terminals and frame for one minute.在端子与端子之间,端子与外壳之间施加 DC100V, 一分钟	1 GΩ 以上
6.3 Dielectric Withstanding Voltage 电气耐压	AC250V(50Hz or60Hz) shall be applied between terminals and between individual terminals and frame for one minute. 在端子与端子之间,端子与外壳之间施加 AC250V(50HZ-60HZ)一分钟	There shall be no breakdown. 无击穿、闪烁现象
6.4 Bounce 抖动	Lightly striking the center of the stem at a rate encountered in normal use (3 to 4 operations per sec), Bounce shall be tested when “ON” and “OFF”. 在正常使用中(以每秒 3-4 回)轻轻地在手柄中心加力,在通与断瞬间测试抖动 <div style="text-align: center;">  <p style="text-align: center;">t 为触点抖动时间</p> </div>	5 mS 以下

规格承认书

规格书编号
2022040201

品名

轻触开关

型号

EL-47019PBS

5/10

7.Mechanical specification 机械的性能

Item 项目	Test Condition 测试条件	Requirements 要求
7.1 Operating Force 动作力	Placing the switch such that the direction of switch operation is vertical and then gradually increase the load applied to the top center of the stem.the maximum load required for the switch to come to a stop shall be measured . 开关的动作方向为垂直放置开关向推柄中心逐渐地增加负荷到推柄停止时所测量的最大负荷。	300 ± 100 gf (3 ± 1 N)
7.2 Travel 行程	Placing the switch such that the direction of switch operation is vertical and then applying a below static load to the top center of the stem.the travel distance for the switch to come to a stop shall be measured. 开关的动作方向为垂直放置开关并以双倍动作力的静负荷作用推柄中心，测量推柄中心从开始到停止的行程距离。	0.2 ± 0.1 mm
7.3 Return Force 返回力	The sample switch is installed such that the direction of switch operation is vertical and, upon depression of the stem in its center the whole travel distance , the force of the stem to return to its free position shall be measured.开关的动作方向为垂直放置开关, 在已有行程的推柄中心向上减少压力, 推柄回到自由位置时所测量到的力.	50 gf min
7.4 Static Strength 静止强度	Placing the switch such that the direction of switch operation is vertical and then a below static load shall be applied in the dirction of stem operation. 开关的动作方向为垂直放置开关,开关操作方向施加以下静核重量 (1)Depression 按压力 : 1N (2) Direction: 时间 : 15 s (3)Number of times 回数 : 1 time	There shall be no sign of damage mechanically and electrically. 无机械的和电气的损伤迹象

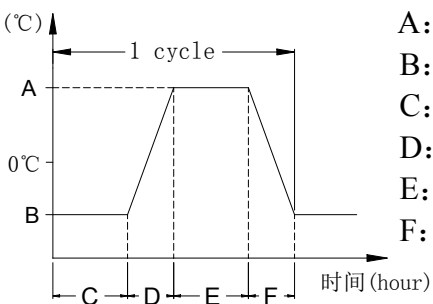
规格承认书

规格书编号
2022040201

品名	轻触开关	型号	EL-47019PBS
----	------	----	-------------

6/10

8. Environmental specification 使用耐侯性能

Item 项目	Test Condition 测试条件	Requirements 要求
8.1 Moisture Resistance 耐潮湿	Following the test set forth below the sample shall be left in normal temperature and humidity conditions for one hour before measurements are made: 样品按下列条件进行耐潮湿试验, 试验后在正常温度和湿度条件下放置 1 小时后测定 (1) Temperature: $60 \pm 2^{\circ}\text{C}$ 温度 (2) Relative humidity: 90 to 95% 相对湿度 (3) Time: 96 hours 时间 Water drops shall be removed. 擦除水珠	Contact resistance: <u>500</u> m Ω Max. 接触电阻 Insulation resistance : <u>10</u> M Ω Min. 绝缘电阻 Item 6.3、6.4 Item 7
8.2 Low Temperature Resistance 耐低温	Following the test set forth below the sample shall be left in normal temperature and humidity conditions for one hour before measurements are made: 样品按下列条件进行耐低温试验, 试验后在正常温度和湿度条件下放置 1 小时后测定 (1) Temperature: $-40 \pm 2^{\circ}\text{C}$ 温度 (2) Time: 96 hours 时间 Water drops shall be removed. 擦除水珠	Item 6 Item 7
8.3 Heat Resistance 耐热	Following the test set forth below the sample shall be left in normal temperature and humidity conditions for one hour before measurements are made: 样品按下列条件进行耐热试验, 试验后在正常温度和湿度条件下放置 1 小时后测定 (1) Temperature: $85 \pm 2^{\circ}\text{C}$ 温度 (2) Time: 96 hours 时间	Item 6 Item 7
8.4 Change of Temperature 温度循环	Following ten cycles of high temperature test .The Sample shall be Placed in Normal temperature and humidity Conditions for one hour before measurements are made. During this test, water drops shall be removed. 样品按下列条件进行高低温循环试验, 试验后在正常温度和湿度条件下放置 1 小时后测定  <p style="text-align: right;">A: $+60^{\circ}\text{C}$ B: -10°C C: 2 小时 D: 1 小时 E: 2 小时 F: 1 小时</p> <p style="text-align: center;">(1) Number of cycles 周期: 5 cycles</p>	Item 6 Item 7

规格承认书

规格书编号
2022040201

品名

轻触开关

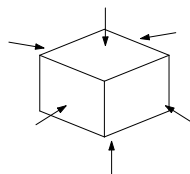
型号

EL-47019PBS

7/10

9. Environmental specification 使用耐久性能

Item 项目	Test Condition 测试条件	Requirements 要求
9.1 Operating Life 动作寿命	Measurements shall be made following the test set forth below: 按下列条件进行寿命试验 (1)DC 5V 5mA resistive load. DC 5V 5mA 阻性负载 (2)Rate of operation:2 to 3 operations per second 动作频率:2-3 次/每秒 (3)Depression: <u>450</u> gf 按压力 (4)Cycles of operation: 5×10^4 cycles 动作次数: 5×10^4 次	Contact resistance: <u>1</u> Ω Max. 接触电阻 Insulation resistance : <u>10</u> M Ω Min. 绝缘电阻 Bounce: <u>20</u> ms Max 抖动 Operating force: 动作力 $\pm 30\%$ of initial force. $\pm 30\%$ 初始动作力 Item 6.3
9.2 Vibration Resistance 耐振动	Measurements shall be made following the test set forth below: 按下列条件进行抗振动试验 (1)Range of oscillation: 10 to 55Hz 频率范围 (2)Amplitude,pk-to-pk:1.5mm 振幅:峰-峰 1.5mm (3)Cycle of sweep: 10-55-10Hz in one minute, approx.扫描周期: 10-55-10Hz 约一分钟内 (4)Mode of sweep: Logarithmically sweep or uniform sweep. 扫描方式: 对数扫描式恒定扫描 (5)Direction of oscillation: 振动方向 Three mutually perpendicular directions, including the direction of stem travel. 3 个相互垂直方向,包括推柄行程方向 (6)2 hours each ,for a total of 6 hours.每方向 2 小时.共 6 小时	Item 6 Item 7
9.3 Impact Shock Resistance 抗冲击	Measurements shall be made following the test set forth below: 按下列条件进行冲击试验 (1) Acceleration: $784m/s^2$ 加速度 (2)Cycles of test : 3 cycles each in 6directions, for a total of 18cycles 试验 次数: 每个方向 3 次, 6 个方向共 18 次	Item 6 Item 7



规格承认书

规格书编号
2022040201

品名	轻触开关	型号	EL-47019PBS	8/10
----	------	----	-------------	------

10. Soldering conditions 焊接条件:

Item 项目	Item 项目	Recommended conditions 推荐条件
10.1	Hand Soldering 手工焊接	<p>Please practice according to bellow conditions: (1)Soldering temperature : 350°C Max (2)Continuous soldering time: 3 S Max (3)Capacity of soldering iron: 20 W Max 请按以下条件进行焊接: (1)焊锡温度: 350°C Max (2)连续焊接时间: 3 S Max (3)电烙铁的功率: 20 W Max</p>
10.2	Automatic Flow Soldering 自动焊接	<p>For the product of SMT ,type solder according to the following conditions 对于SMT产品, 请按以下条件进行焊接</p> <div style="text-align: center;"> <p style="text-align: center;">time inside soldering equipment 炉内通过时间</p> </div> <p>Caution: the condition mentioned above is a temperature on the PWB surface on which parts are mounted. There are cases where PWB temperature greatly differs from switch's surface temperature depending on PWB material, size, thickness, etc. The switch's surface temperature shall not allowed to exceed 260°C 注意: 以上提及的条件是零部件上 PWB 表面的温度, 由于PWB 的材料、尺寸、厚度等不同, PWB 从开关表面获得的温度也会有很大产不同, 因此, 千万小心不要让开关表面温度超过 260°C</p> <p>Twice soldering would be reflow the temperature goes down to a normal temperature 两次回流焊接温度降到正常温度</p>
10.3	Solderability 可焊性	<p>Measurements shall be made following the test set forth below: 按下列条件进行试验 (1)Soldering Temperature:245±3°C 焊接温度:245±3°C (2)Flux:5-10 sec 助焊剂: 沾覆5±1 秒 (3)Duration of solder mmersion: 5±1sec 浸焊时间: 5±1sec</p> <p style="text-align: right;">Soldering area is greater than 75% of the total area. 焊锡面积大于总面积的 75%</p>

11. Protection grade 保护等级:

Item 项目	Item 项目	Test Condition 测试条件	Requirements 要求
11.1	IP65 防护等级	<p>The switch is located in the dust-proof experimental box and should not enter dust at a low pressure of 20mbar. 开关在防尘实验箱体内, 在20毫巴的低压时不应进入灰尘 The distance between the test sample and the water spray port is 2.5m ~ 3m, and the water flow rate is 12.5 L/min (750 L/h) and 3min. 使试验样品至喷水口相距为 2.5m ~ 3m , 水流量为 12.5 L/min (750 L/h), 3min</p>	<p>Completely prevent dust intrusion 完全防止灰尘侵入 Prevent the invasion of water rapidly ejected from big waves or spray holes. 防止大浪或喷水孔急速喷出的水侵入</p>

规格承认书			规格书编号 2022040201
品名	轻触开关	型号	EL-47019PBS
			9/10

12. Other Precautions 其他注意事项:

- (1) Following the soldering process, do not try to clean the switch with a solvent or the like.
进行焊接过程中，不可以用溶剂或类似品清洗开关
- (2) Safeguard the switch assembly against flux penetration from its topside.
防止助焊剂从开关的顶端渗入
- (3) Please have the products keep in close status and the storage time is 90 days guaranty after delivering the goods at most.
交货后保证开关处于封密状态并库存时间 90 天以下

13. Reel Packaging 盘装

13.1 Scope 范围

This specification covers the requirements of the reel packaging for SMT standard type of tact switches. 该规范包含 SMT 标准型贴片开关的绕带封装的要求

13.2 Packaging Materials 封装材料

Item	项目	Description	说明
Package	包装	Cartons	卡通箱
Reel	转轴	Delete Cartons	可降解箱
Carrier Tape	载带	Polypropylene	聚丙烯

13.3 Packaging Quantity 封装数量

13.3.1 The number of the reels. 转轴数量

Fifteen (20) reels at maximum. Which contain 140K pcs switches
Shall be packed in a package. 一箱装 20 盘,有 140K 只产品

13.3.2 The number of the switches. 产品数量

7K pcs switches shall be packed in a reel. 一个转轴包 7K 只产品

13.3.3 It should be noted that we regard two cartons 对出口包装需注意用两个箱子包装 mentioned above as on package for export.